

VISÃO GERAL DA MARCA

A Nossa Logo



Tema 2024 da Igreja Metodista.





Índice

Temas Abordados

Sobre a logo
Paleta de cores
Tipo de logo
Espaço da logo
Posicionamento
Aplicação



Cores **Utilizadas**



#341717



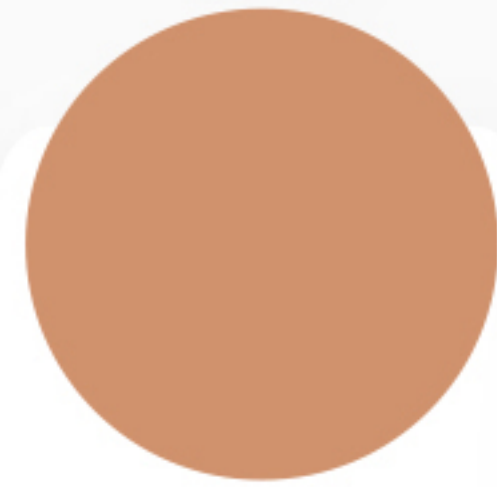
#565E26



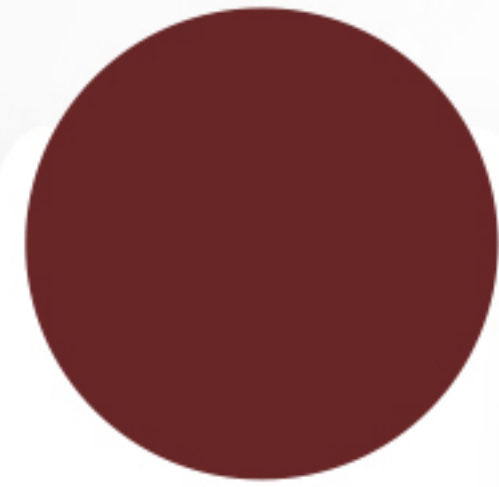
#DE5555



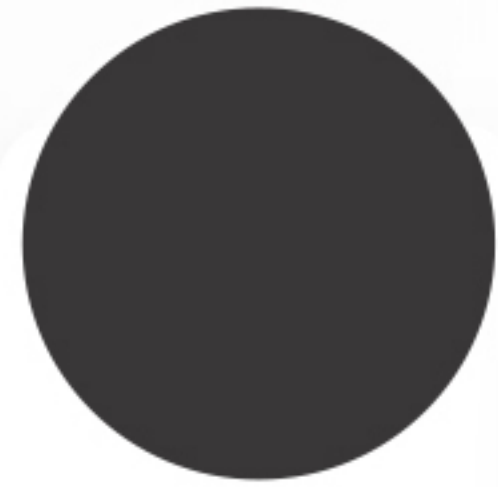
#EAAA45



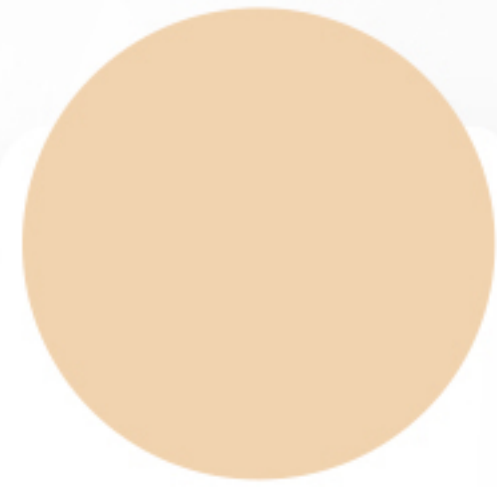
#D0926D



#682626



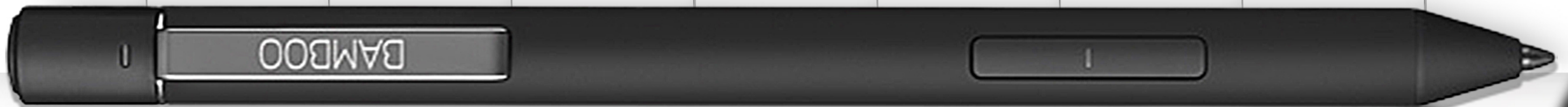
#393738



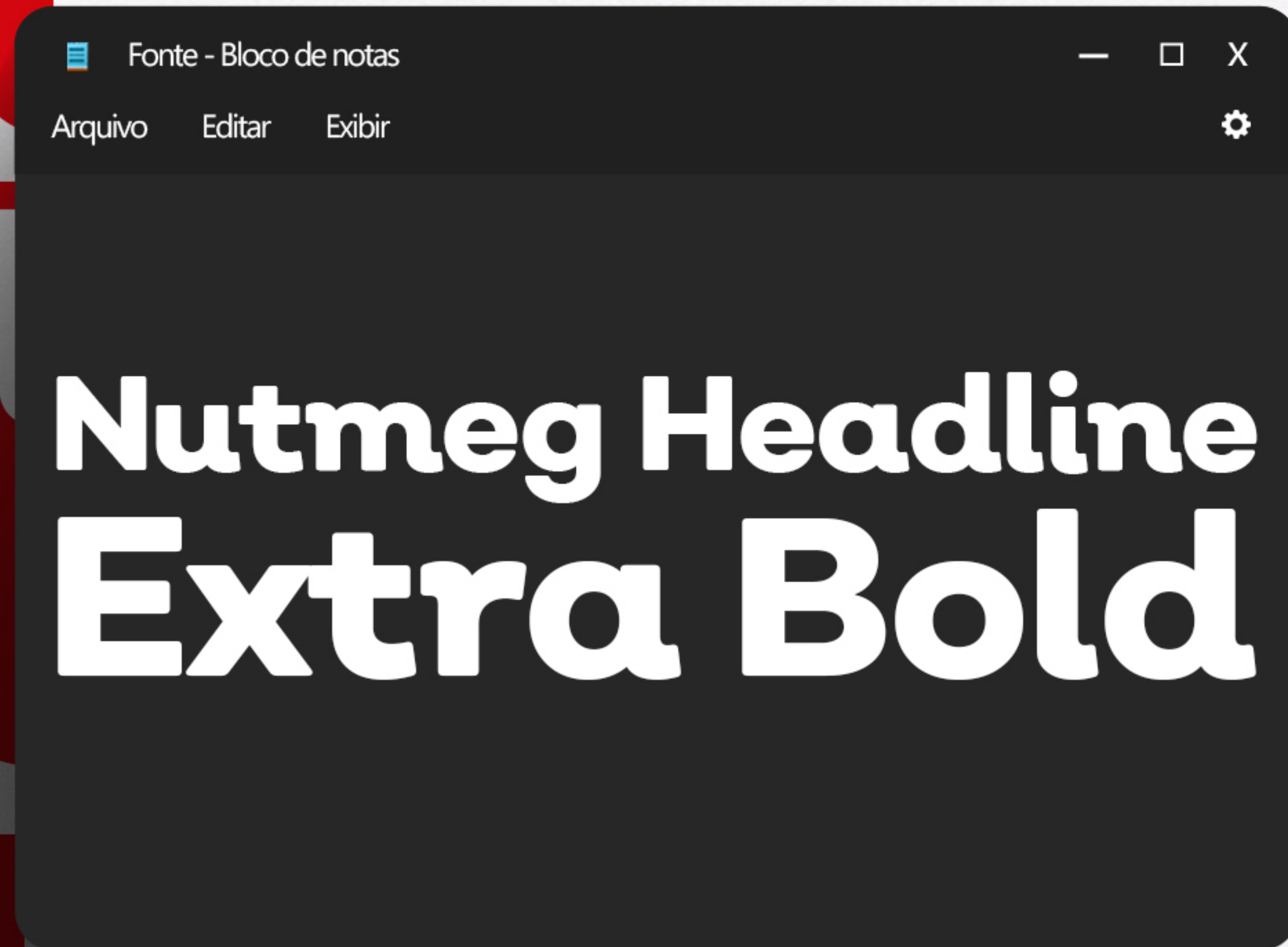
#F1D3AF



#F7E1C0



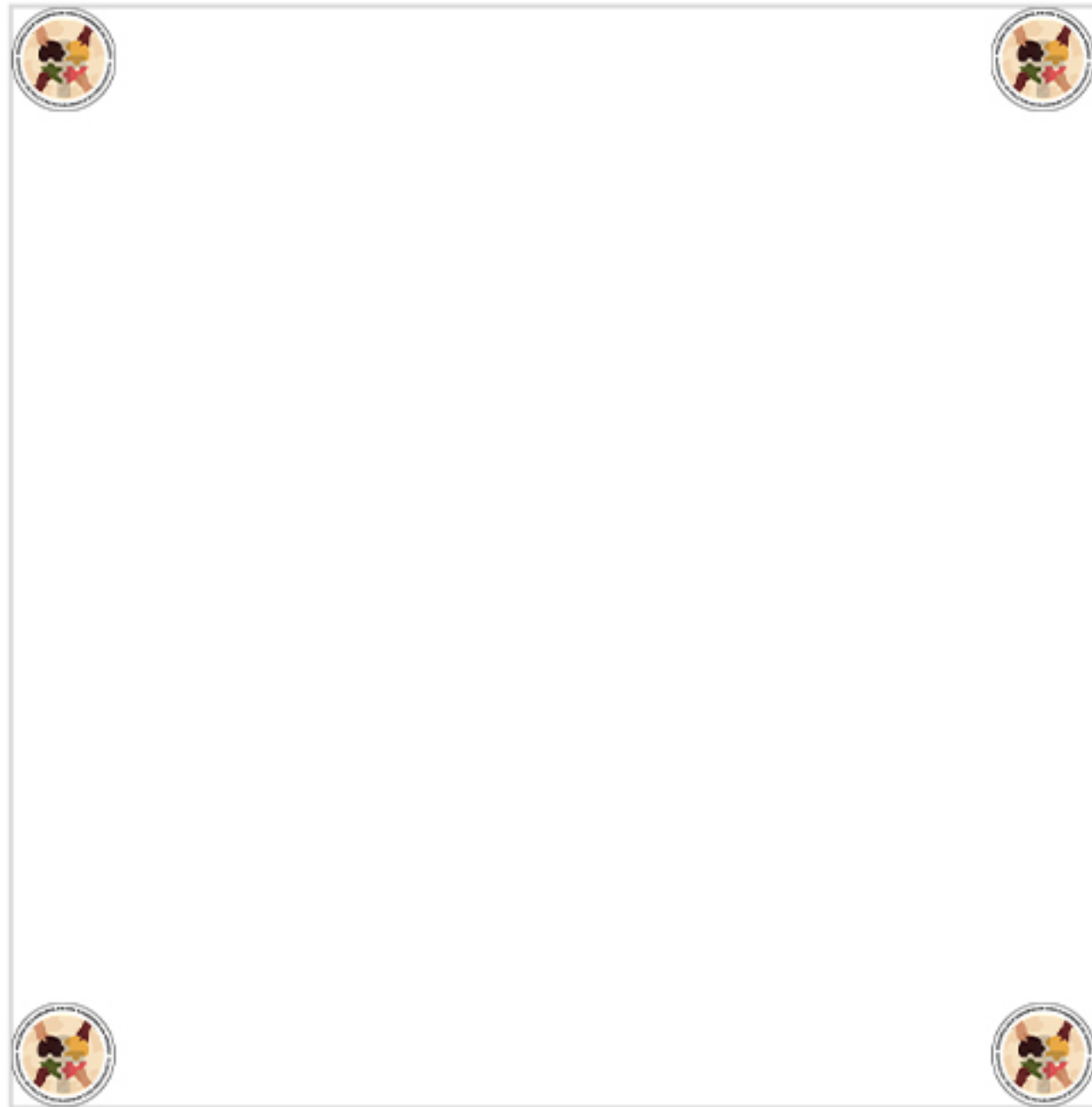
fonte **Utilizada**



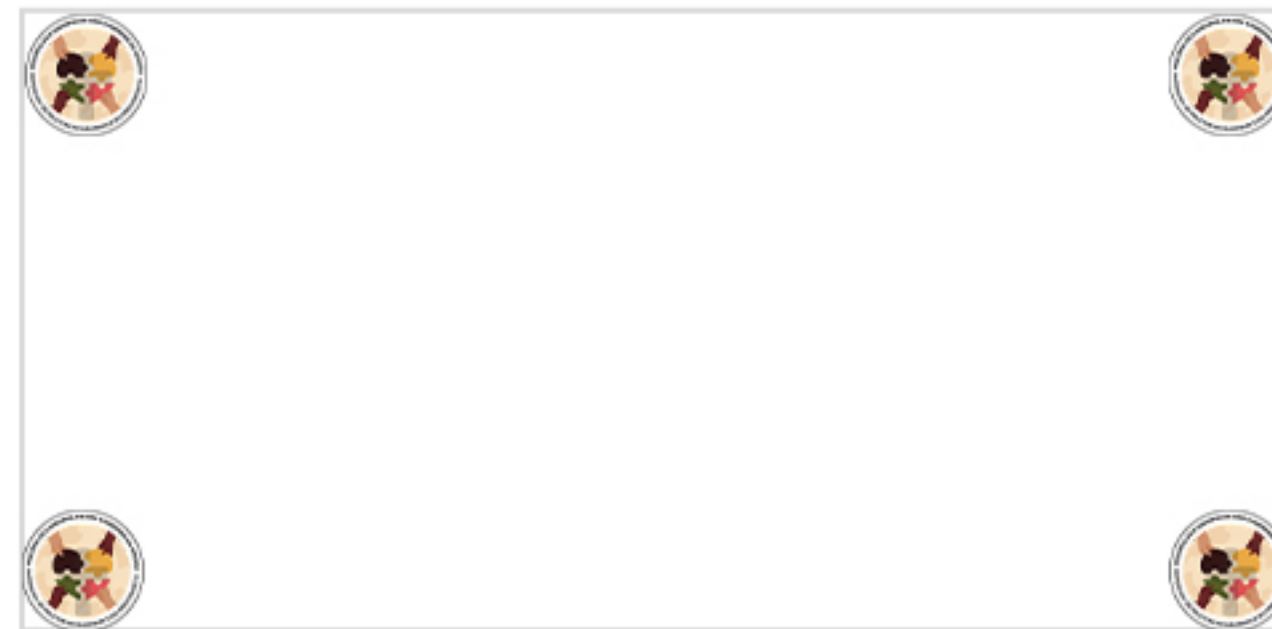
Posicionamento

O espaço seguro para colocar a logo

O logo pode ser posicionado onde seja mais adequado, dependendo da aplicação e do tom.



Quadrado



Paisagem



Retrato





Uso da Logo

Regras sobre o posicionamento adequado

Vimos aqui a aplicação prática do posicionamento do logo nas disposições quadrado, paisagem e retrato.









